

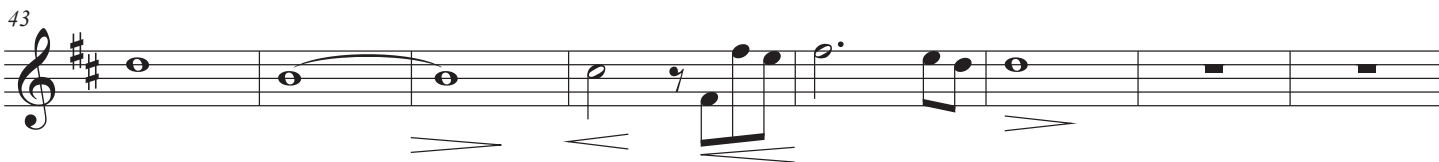
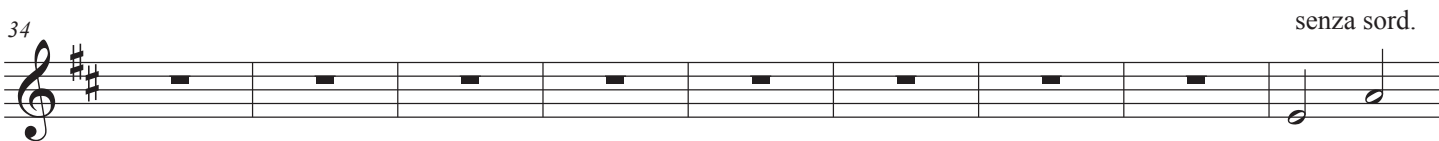
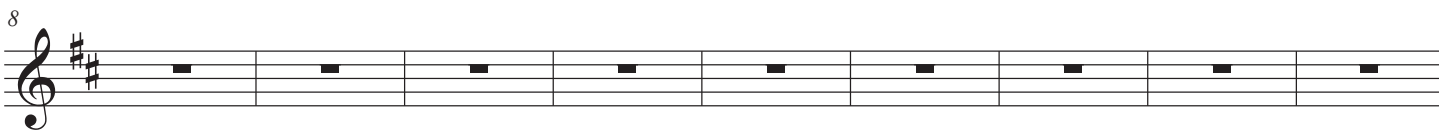
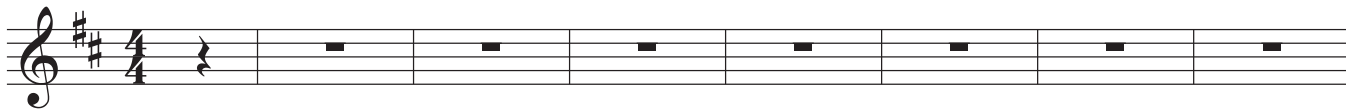
Trumpet in B \flat 2

27. Nephi's Psalm

Lyrics arranged by Annette Mackey
From 2 Nephi 4:17 - 31

Annette Mackey

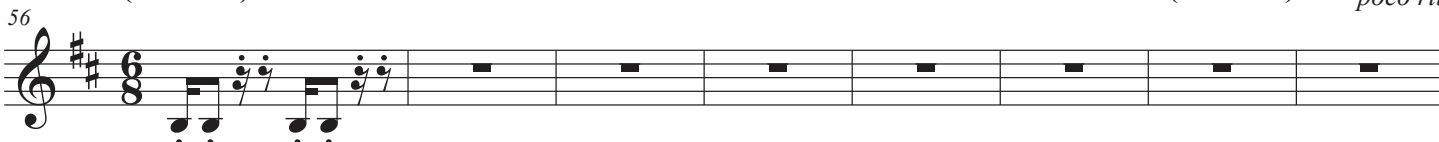
$\text{♩} = 140$



$\text{♩} = 120$

$\text{♩} = 140$

poco rit.



27. Nephi's Psalm

(♩ = 150)

♩ = 160

(♩ = 150)

64 *accelerando* *poco rit.*

mp *mf*

Detailed description: This staff contains measures 64 through 68. Measures 64-66 are whole rests. Measure 67 begins with a 5/4 time signature and contains a melodic line starting on G4, moving up stepwise to D5. Measure 68 is in 6/8 time and contains a melodic line starting on G4, moving up stepwise to D5. Dynamics are marked *mp* at the start of measure 67 and *mf* at the start of measure 68.

69 *molto rall.* *allargando* *meno mosso* ♩ = 130

Detailed description: This staff contains measures 69 through 76. Measure 69 is in 4/4 time and contains a melodic line starting on G4, moving up stepwise to D5. Measures 70-72 are whole rests. Measure 73 is in 9/8 time, measure 74 is in 6/4 time, and measure 75 is in 4/4 time, all containing whole rests. Measure 76 is in 4/4 time and contains a whole rest. A hairpin crescendo is placed over measures 69-76. The tempo marking *meno mosso* is placed at the end of the staff.

77 *poco rit.* *a tempo* *rallentando* *meno mosso*

Detailed description: This staff contains measures 77 through 81, all of which are whole rests. The tempo markings *poco rit.*, *a tempo*, and *rallentando* are placed above the staff. The *meno mosso* marking is placed at the end of the staff.

