

Music Theory Worksheet 2

Annette Mackey

1.  This is a dotted half note. Each dotted half note get 3 counts. Draw a dotted half note on each line.



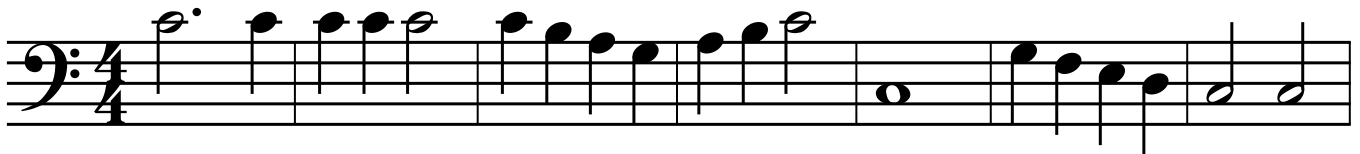
2. Under each note write "W" for whole, "H" for half, "Q" for quarter, and "DH" for dotted half note. Next write how many counts each note gets.



3. Draw four more quarter notes below.  Draw four more whole notes below. 

- Draw four more half notes below.  Draw four more dotted half notes below. 

4. This is a staff with notes on it. Beneath each note write "W" for whole note, "H" for half note, "DH" for dotted half note, or "Q" for quarter note. Then write how many counts each note gets.



8

