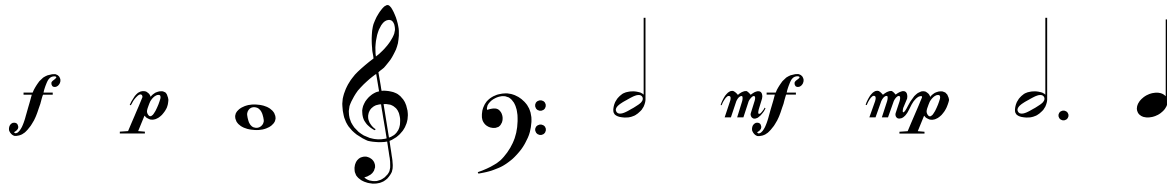


# Music Theory Worksheet 6

Annette Mackey



Draw each symbol next to its name and definition.

**treble clef**

**medium soft**

**mezzo forte**

**3 count note**

**dotted half note**

**this clef is usually  
played by the right hand**

**piano**

**4 count note**

**bass cleff**

**soft**

**mezzo piano**

**loud**

**quarter note**

**2 count note**

**whole note**

**1 count note**

**half note**

**this clef is usually  
played by the left hand**

**forte**

**medium loud**